



Product Update

LED Luminaire Indoor

Angga Hudaya
Product Marketing
June 2018

Applications

Indoor



Applications

Indoor Retail



Downlight

- Requested Lux Level
- Normal CRI
- Wide Distribution



Spot Track

- High CRI
- Narrow Beam angle
- Good SDCM
- Adjustable angle



Indirect lighting

- Good Uniformity
- Good SDCM
- No Blank spot

Applications

Indoor Hospitality



Downlight

- Requested Lux Level
- Normal CRI
- Wide Distribution



Spotlight

- High Lux Level
- High CRI
- Narrow Beam angle
- Good SDCM
- Less Glare



Indirect lighting

- Good Uniformity
- Good SDCM
- No Blank spot

IPS - Prof luminaires

2017

2018

W1

W2

W3

W4

Lux Space G4 released



- 700~4000lm,
- up to 120lm/W
- POE, DALI-VLC
- Tunable White

Lux Space Tunable White



- Max 2200lm
- 80-97lm/watt
- Tunable White, wide CCT 2700 – 6500K

Green Space G4



Green Space G5



- 600-2200lm
- 110lm/W
- DALI -VLC
- POE

Hospitality Modular family



- 450~3000lm
- Modular
- 50,000 hrs lifetime

Flex Accent G2 extension – Tunable white + Connected

- Recessed/Grid/Track
- More & Slim accessories
- Deep recessed with visual comfort
- Easy to install (Separate frame)
- BA 10/18/20/34
- CRI 80/90
- SDCM<4
- 30Khrs
- Tunable White
- IP20



SmartBright LED Downlight



- 600-1500lm
- 90lm/W
- 25000 hours

Flexible LED Cover



- 300-1200lm
- 15K hours,

Essential SmartBright Projector - Track






- 800-3000lm
- 20K hours,
- Track

Statement

Performance

Core

LED Downlight portfolio

	Positioning		
Statement	<p>LuxSpace Series Best visual comfort and leading technology LED downlight</p>	<p>LuxSpace Gen4</p> <ul style="list-style-type: none"> ✓ best visual comfort (UGR19) ✓ Esthetics design ✓ 120lm/W ✓ 50khrs ✓ DALI dimming ✓ PoE/DALI-VLC option 	
Performance	<p>GreenSpace Series (CFL/CDM replacement) Best TCO payback story LED specification Downlight</p>	<p>GreenSpace G5</p> <ul style="list-style-type: none"> ✓ UGR22-25 ✓ High efficacy (Typ.~ 110lm/W) ✓ CRI >80 ✓ 50Khrs ✓ DALI dimming ✓ PoE/DALI-VLC option 	
Core	<p>SmartBright Series Cost attractive product with good enough quality and performance</p>	<p>SmartBright LED Downlight G4</p> <ul style="list-style-type: none"> ✓ UGR25 ✓ >85lm/W ✓ CRI 80 ✓ 30Khrs ✓ IP20 ✓ Recessed 	

Downlight

LuxSpace Gen4



LuxSpace G4 – Features and benefits



Features and benefits:

- Energy efficient - System efficacy up to **120 lm/W**
- Product diversity – **7** lumens, **4** cut-out sizes, BA **30** & 60, CRI 80 & **90**, IP20 & **IP54 (Front)**
- Excellent light quality – **SDCM < 3.5, UGR<=19**
- Reliable performance - Lifetime **50,000hours** L70 Ta 25° C
- System compatibility – DALI, **POE, DALI-VLC** available

Applications

- Office
- Hotel
- Shopping mall
- Retail store
- Restaurant
- Airport



Technical Specifications – Fixed output version

Luxspace G4 – Fixed output			Unit	DN588B LED6 PSU	DN589B LED10 PSU	DN590B LED15 PSU	DN591B LED20 PSU	DN592B LED25 PSU	DN593B LED30 PSU	DN594B LED40 PSU
				D100/D125	D125/D150	D125/D150	D125/D150/D200	D150	D200	D200
System performance	Initial lumen typ. @840	[lm]	740/750	1000/1050	1500/1550	2100/2150/2150	2600	3400	4300	
	Power cons. Typ.	[W]	6.6/6.6	9.3/8.4	13.5/13.5	19.3/19.3/17.5	22.6	32.5	39.7	
	Efficacy @840	[lm/W]	111/114	110/125	112/115	114/113/125	117	110	113	
	L2 Color consistency <=3	[SDCM]	3	3	3	3	3	3	3	
	Lifetime (ta 25°C) @B50L70	[hrs]	50,000	50,000	50,000	50,000	50,000	50,000	50,000	
	Ambient operation temp	[°C]	25	25	25	25	25	25	25	
	Operating temp range	[°C]	-20~40	-20~40	-20~40	-20~40	-20~40	-20~40	-20~40	
	Electrical class I,II		Class II	Class II	Class II	Class II	Class II	Class II	Class II	
	IP		IP20	IP20	IP20	IP20	IP20	IP20	IP20	
ROHS compliance		Yes	Yes	Yes	Yes	Yes	Yes	Yes		
Light source	LED type		Nichia 757GRT V1	Nichia 757GRT V1	Nichia 757GRT V1	Nichia 757GRT V1	Nichia 757GRT V1	Nichia 757GRT V1	Nichia 757GRT V1	
	CRI	CRI80	Ra >=80; R9 >= 0	Ra >=80; R9 >= 0	Ra >=80; R9 >= 0	Ra >=80; R9 >= 0	Ra >=80; R9 >= 0	Ra >=80; R9 >= 0	Ra >=80; R9 >= 0	
		CRI90	Ra >=90; R9>= 50	Ra >=90; R9>= 50	Ra >=90; R9>= 50	Ra >=90; R9>= 50	Ra >=90; R9>= 50	Ra >=90; R9>= 50	Ra >=90; R9>= 50	
Optical	Beam angle	[°]	36,59/56	32,56/60	32,56/59	32,56/34,60/63	34,60	34,63	34,63	
	UGR		<19	<19	<19	<19	<19	<19	<19	
	CCT available	[K]	3000 , 4000	3000 , 4000	3000 , 4000	3000 , 4000	3000 , 4000	3000 , 4000	3000 , 4000	
	Shielding Angle	[°]	38	38	38	38	38	38	38	
Driver	Supply Voltage		220V~240Vac ,50/60Hz	220V~240Vac ,50/60Hz	220V~240Vac ,50/60Hz	220V~240Vac ,50/60Hz	220V~240Vac ,50/60Hz	220V~240Vac ,50/60Hz	220V~240Vac ,50/60Hz	
	power factor		0.9	0.9	0.9	0.9	0.9	0.9	0.9	
	Output current ripple @LF		<4%	<4%	<4%	<4%	<4%	<4%	<4%	
	Driver type		Fix	Fix	Fix	Fix	Fix	Fix	Fix	
Mechanical & appearance	Cut-out	[mm]	Ø100/Ø125	Ø125/Ø150	Ø125/Ø150	Ø125/Ø150/Ø200	Ø150	Ø200	Ø200	
	Mounting type		Recessed	Recessed	Recessed	Recessed	Recessed	Recessed	Recessed	
	Maintenance		Driver replaceable	Driver replaceable	Driver replaceable	Driver replaceable	Driver replaceable	Driver replaceable	Driver replaceable	

Remarks

- Lumen tolerance -10%~+15%
- Lumens above refer to CRI 80 4000K IP20 with clear surface reflector, different CCT/CRI/IP/reflector will have slightly different lumen output, 10 approximately 5% lower than above value for each configuration change

LuxSpace G4 Vs G3

LuxSpace 3.0

Lumen output	600lm,1000lm,1500lm,2000lm,2500lm,3000lm
System efficacy	85 ~100 lm/W
UGR	19~22
Cut-out dimension	5", 6", 8"
Beam angle	60~65° , 90°
CRI	80
CCT	3000K, 4000K
Driver options	Fixed output / DALI
Lifetime	50,000hours L70 Ta 25° C

LuxSpace 4.0

Lumen output	70lm, 1000lm, 1500lm, 2000lm,2600lm, 3400lm,4300lm
System efficacy	Up to 120 lm/W
UGR	15~19
Cut-out dimension	5", 6", 8"
Beam angle	60~65°
CRI	80
CCT	3000K, 4000K
Driver options	Fixed output / DALI-VLC(ETO) / POE
Lifetime	50,000hours L70 Ta 25° C

LuxSpace 3.0



LuxSpace 4.0



lm/cut-out	600lm	1000lm	1500lm	2000lm	2500lm	3000lm	700lm	1000lm	1500lm	2000lm	2600lm	3400lm	4300lm
4" Cut-out													
5" Cut-out	STD						STD						
6" Cut-out		STD	STD					STD	STD				
8" Cut-out				STD	STD	STD				STD	STD	STD	STD

Downlight

GreenSpace Gen5



GreenSpace G5 – Features and benefits



PSU



PSD



Features and benefits:

- Energy efficient – Average system efficacy **110 lm/W**
- Product diversity – **4 lumens**, **3 cut-out sizes**, **3 CCTs**; **UGR22/25**; IP20 & **IP54 (Front)**
- Design compactness – **4"** up to 950lm, **6"** up to 1600lm, height **≤100mm** (for 4" & 6" models)
- Reliable performance - Lifetime **50,000hours** L70 Ta 25° C
- System compatibility – DALI, **POE**, **DALI-VLC**, available in some lumen options

Applications

- **Hotel**
- **Shopping mall**
- **Office**
- **Retail store**
- **Restaurant**
- **Airport**



Technical Specifications – Fixed output version



Technical Parameters	DN390B	DN391B	DN391B	DN392B	DN392B	DN393B
Reflector type	ALU / WH	ALU	ALU / WH	ALU / WH	ALU / WH	ALU / WH
Cutout	105~110mm	105~110mm	150~155mm	150~155mm	200~205mm	200~205mm
Lumen output (Typ. @4000K,IP20)	600lm / 650lm	950lm	1100lm / 1150lm	1600lm / 1650lm	1600lm / 1650lm	2100lm / 2200lm
System Power	5.5W	9.5W	9.5W	14.5W	14.5W	19W
SDCM	5	5	5	5	5	5
UGR	22 / 25	22 / 25	22 / 25	22 / 26	22 / 26	22 / 25
CRI	>=80	>=80	>=80	>=80	>=80	>=80
LED Source	APT 2835	APT 2835	APT 2835	APT 2835	APT 2835	APT 2835
CCT	3000K / 4000K / 6500K					
Input voltage	220V-240V/50-60Hz					
Lifetime	50,000 hours (L70 @Ta=25°C)					
Mounting Type	Recessed; fixed by spring tension clips					
Operating temperature	-20°C ~ 40°C					
IP Rating	IP20; IP54 (Front cover)					
Diffuser	PC diffuser with high haze and light transmission					
Reflector	High reflectance painted plastic (ALU coating / White color)					
Driver	PC plastic, driver is integrated into luminaire for PSU version					
Heat sink	Die-casting aluminum					

- Lumen tolerance -10%~+15%.
- 15. Lumens above refer to CRI 80 4000K IP20, different CCT/IP will have slightly different lumen output

GreenSpace G5 Vs G4

	GreenSpace 4.0	GreenSpace 5.0
Lumen output	600lm,1100lm,1600lm,2200lm	60lm, 1100lm, 1600lm, 2200lm
System efficacy Ave.	95 lm/W	110lm/W
UGR	22 / 25	22 / 25
Cut-out dimension	4", 6", 8"	4", 6", 8"
Luminaire height	99mm, 109mm, 118mm	98mm, 100mm, 108mm
Lm/cut-out options	600/4"; 1100/6"; 1600&2200/8"	600& 950 /4"; 1100& 1600 /6"; 2200/8"
CCT	3000K, 4000K, 6500K	3000K, 4000K, 6500K
Driver	Fixed output / DALI	Fixed output / DALI/ DALI-VLC / POE /IA
Lifetime	50,000hours L70 Ta 25° C	50,000hours L70 Ta 25° C



Remarks:

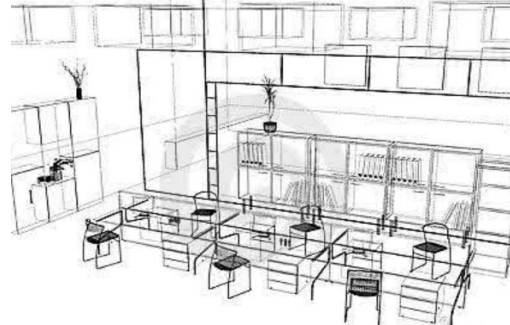
- DALI-VLC/POE are available for key lumen options via ETO

Downlight

SmartBright LED Downlight G4



Value Proposition



Why this product

- Reliable LED downlight for general lighting application
- Good light quality and comfort light
- Energy efficient design
- Affordable package

How to realize

- Diversity
- Energy saving
- Robust design
- Good reliability
- Quality of light

What we offer

- 3000K/4000K/5000K
- Available in 4/6/7/8in cut-out size with metal housing
- >85lm/w system efficacy
- CRI80, SDCM<5, UGR<25
- 30Khrs lifetime

Applications

- Office
- Retail store
- Residential

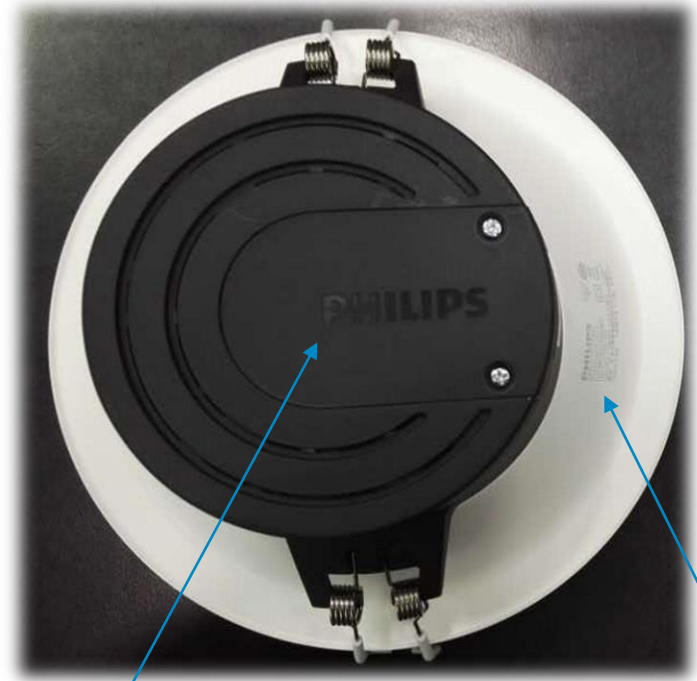


Product visual



RAL9003 White metal housing/reflector




Spring clip with protection sleeve



Embedded Philips logo on the rear terminal block cover

Laser printed label

LED Spot Track portfolio

	Positioning		
Statement	<p>StyleState Series Best-in-class leading technology LED Accent</p>	<p>StyleState</p> <ul style="list-style-type: none"> ✓ Compact ✓ Flexible ✓ Customizable ✓ Superior Light Quality 	
Performance	<p>FlexAccent Series Diversity & Compact, functional accent lighting, cost effective of saving initial cost for the conversion from CDM to LED lighting (CDM replacement)</p>	<p>FlexAccent G2</p> <ul style="list-style-type: none"> ✓ Philips quality of light ✓ CDM retrofit luminaire ✓ Compact housing ✓ Complete family design to fulfil Retail application coverage 	
Core	<p>Essential SmartBright Series Cost attractive product with good enough quality and performance</p>	<p>Essential SmartBright LED Projector</p> <ul style="list-style-type: none"> ✓ Full lumen output 800lm – 3000lm ✓ One piece of lens design ✓ 80lm/W ✓ CRI 80 ✓ 20Khrs 	

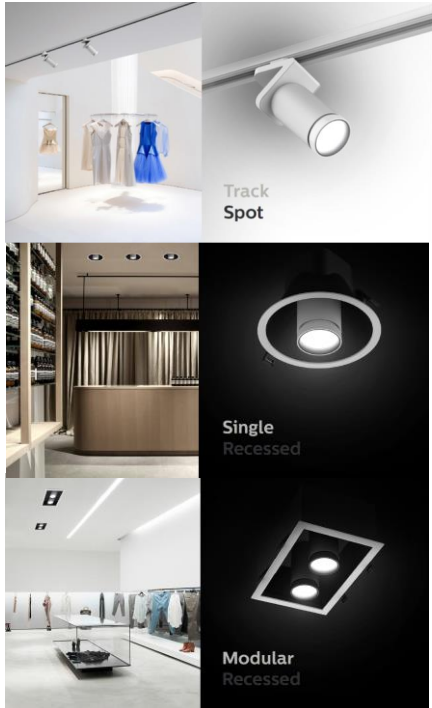
Spot Track

StyleState

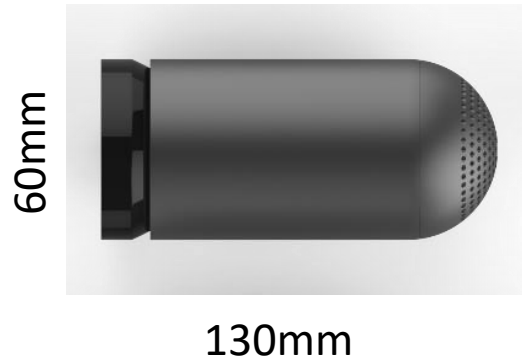


Why this Product

Flexible

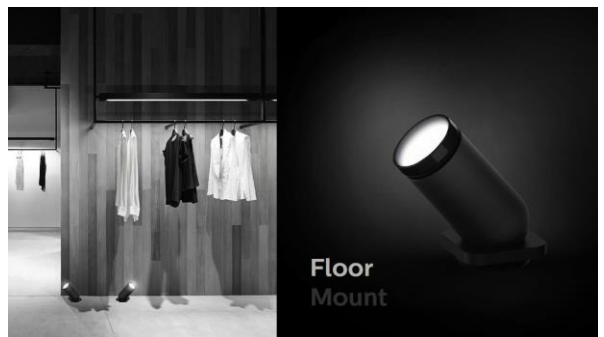
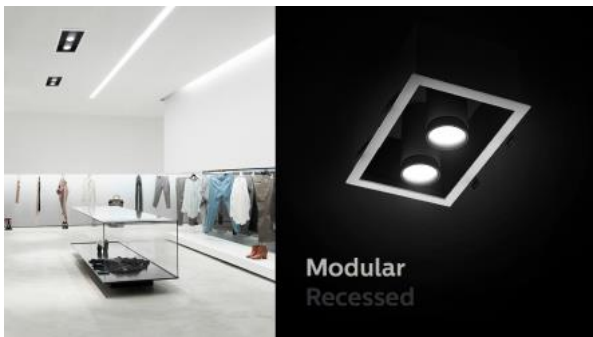
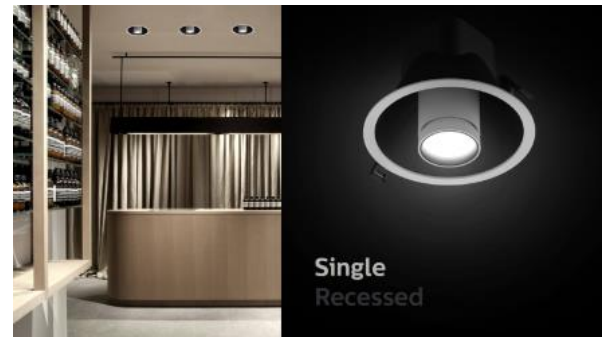


Compact



Customizable





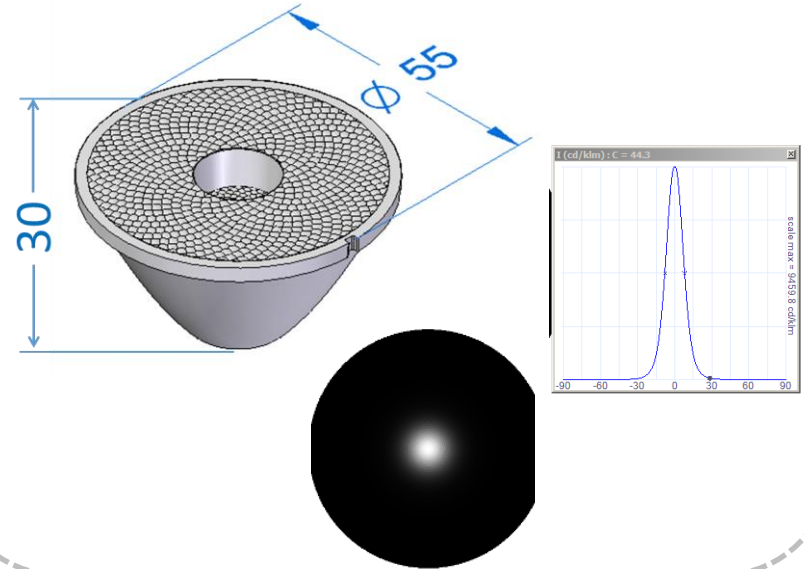


Eye catching design HARD to copy – IP submission

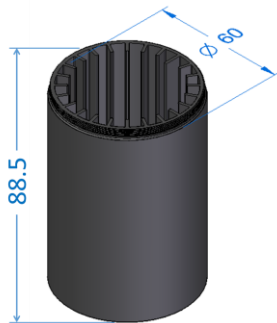
1 Magnetic hinge solution for Accent luminaire 2016PF00190



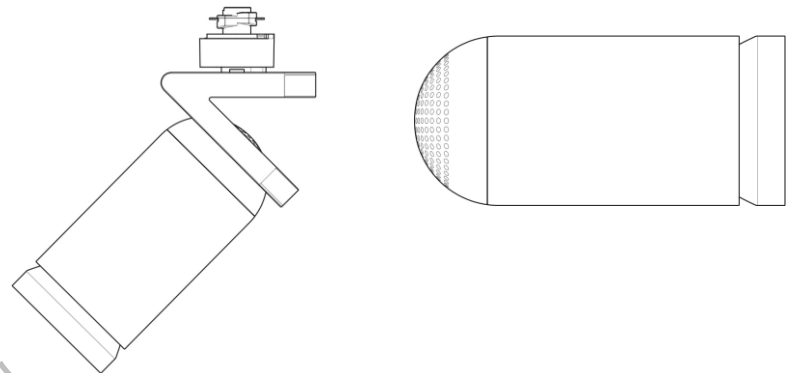
3 A parameterized high punch Lens 2016PF80136



2 Compact cooling system for Accent high power thermal dissipation 2016PF80145



4 Design model 2016DM80006EU



Basic Specification

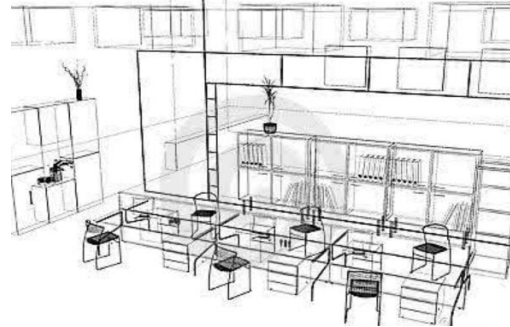
Installation	Track	Recessed	Modular
Lumen - typical (940 NB, Ta25°C)	2041lm	2041lm	4082lm
Beam Angle	NB: 15° - 17° MB: 21° - 25° WB: 31° - 36°		
CCT	3000K /4000K		
CRI	Typ90, min87		
SDCM	≤ 3		
Adjustment Angle	15° - 70°	0° - 22°	0° - 30°
Cutout (mm)	/	150	L: 265; W:165
Voltage	220~240V,50/60Hz		
Power	28.5W		
PF (min.)	0.95, min.0.9		
Driver	Mono		
IP rate	IP20		
Classification	Class II, SELV Equivalent		
Lifetime	50,000 hrs @L70B50, Ta25°C		
Operating Temperature	-15°C~35°C		
Approbation	CCC/CB/CE/EMC		
Housing Color option	Black RAL9004 / White RAL9003		

Spot Track

FlexAccent G2 Track



Value Proposition



Why this product

- Compact and robust design
- Full retail application coverage
- Light quality meets CDM

How to realize

- Philips quality of light
- CDM retrofit luminaire
- Compact housing
- Family design language of recessed, modular and track mounted type

What we offer

- Pane angle: 0->300; tilt angle : 0-70
- 4 lumen packages (LED10/LED20/LED30/LED35)
- 3 beams (NB, MB, WB)
- 2CCT & 2CRI available (830, 840, 930, 940)
- Track version available in 1C and 3C adaptor



Applications

- Retail shop
- Fashion store
- Shopping mall



Top 3 Differentiators



High I_{max}
Good punch effect

Quality of Light



Premium white
R₉>50

Outstanding colors



Compact size of
Gear box & Luminaire

Smooth design,
Fine detailing

Compact design

Compact & Elegant Design

Compact design luminaire
With Fine detailing



Die-casting process makes
the cooling effectiveness.



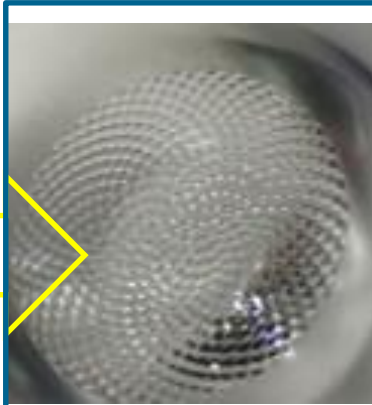
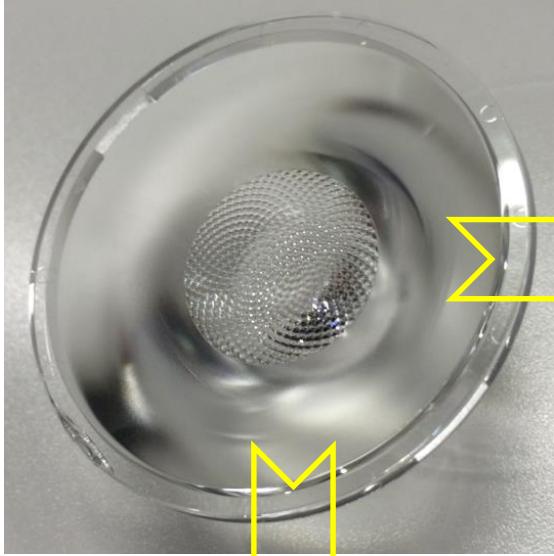
Slim gear box aligned
with track



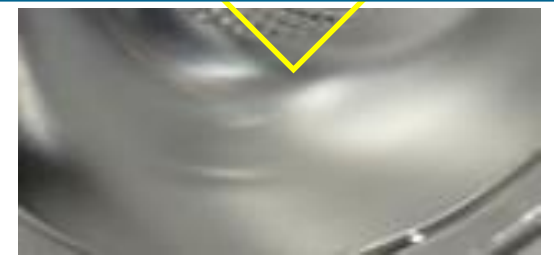
Easy wiring, no
additional connection.



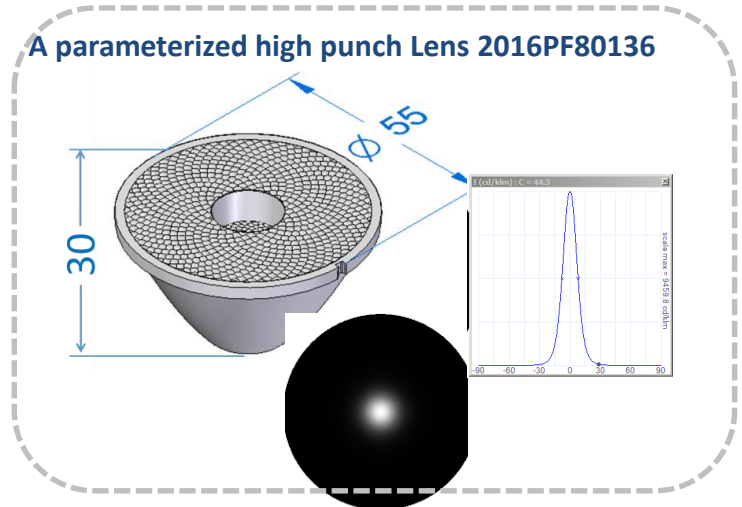
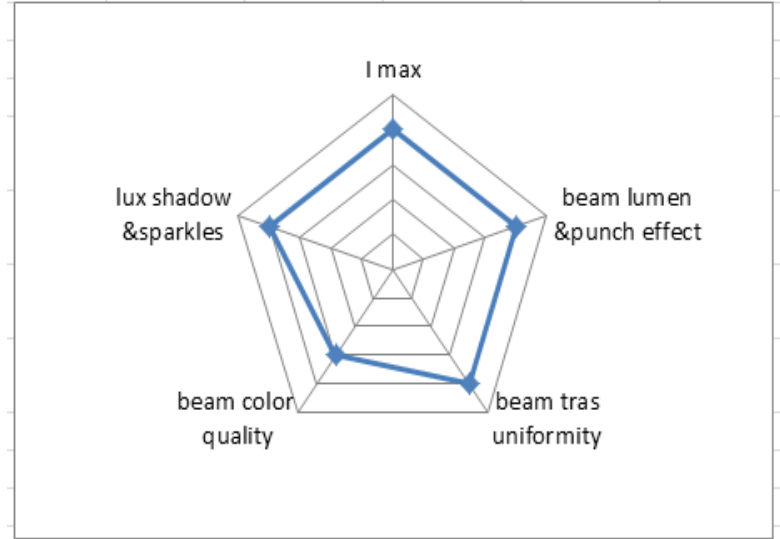
Optical design Sunflower Lens design with IP 2016PF80136



Optimized Sunflower design delivers high I_{max} , punch effect and superior color-mixing, no hot/dark spot and uniform light



Optimized "cloud" technology, reduces glare but without compromising the lumen output



Specification – ST391

Category	Specification			
Lumen - typical (830)	1000-10%lm	2000-10%lm	3100-10%lm	3500-10%lm
Watt	11.5W	25.5W	37W	46W
Beam Angle	17 ± 2		19 ± 2	
	20 ± 2		23 ± 2	
	34 ± 2		34 ± 2	
CCT	3000K PW/4000K			
CRI	80/90			
SDCM	≤ 4			
Adjustment Angle	pane angle: 0->300; tilt angle : 0-70			
Adaptor	GC: 1C ; GM 1C & 3C ; TW: 2 line adaptor			
Size (mm)	Φ72x110mm (head)		Φ90x130mm (head)	
	47x166X36mm (driver box)		50x186X36mm (driver box)	
Voltage (ac)	100~240V, 50/60Hz		220~240V,50/60Hz	
PF (min.)	0.9			
Driver	Mono			
IP rate	IP20			
Classification	Class II			
Lifetime	30,000 hrs @L70B50, Ta25°C			
Operating Temperature	-15°C~35°C			
Installation	Horizontal & Vertical (1C 1000lm/2000lm)			
Approbation	CCC/CB/CE/SAA/LM79 (2000lm 830/840,3000lm 830 internal lab report)			
Color option	White RAL9010			

**Coming
Soon**

Spot Track

Essential SmartBright Projector



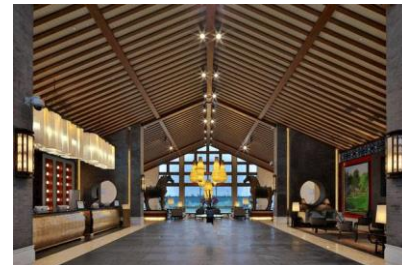
Essential SmartBright ST030T LED Projector



Applications



Retail



Hospitality

Features and Benefits

Full range of lumen output from 800lm to 3000lm

- A complete family offer to customer

2 Colour Temperatures (3000/4000K) with 2 types of lens

- Flexible to suit your style and meet different applications

One piece of lens design (without using reflector)

- Better light beam control

80lm/w System Efficacy

- To replace conventional downlights perfectly

20K (ta=25C L70) hours life time

- Perfect hassle free solution

Aluminum housing

- Better thermal management

Essential SmartBright ST030T LED Projector Data Sheet



Model	Essential SmartBright ST030T
Power	10/15/25/37W
System lumen	800/1200/2000/3000lm
Power factor	0.9
CRI	>=80
Electrical Class	Class I
Input Voltage	220V-240V, 50/60Hz
CCT	3000K / 4000K
Operating Temperature	25°C (-20°C < ta < 40°C)
Lifetime (L70B50@ta=25C)	20,000 hours
IP rating	IP20
Mounting Type	1C Track
Housing colour	RAL9003/9017
Beam	24 and 36 degree
Material	Housing: Aluminum Lens: PMMA

**Coming
Soon**

Spot Light

GreenSpace Flex



GreenSpace Flex Overview

Dedicated to Hospitality Segment

3~6 inch Integrated Version



3~4 inch Non-Integrated



MR16 version



Key Features:

- Product diversity – **5** modules, **4** cut off size, **3** CCTs, **3** Beam angles, CRI **90**, IP20 & **IP54** available, SDCM 3
- Modular Design - Multiply of trims for different application. (~**30** type of accessories)
- Reliable performance - Lifetime **50Khours** L70 Ta 25° C
- Dimming flexibility – Standard: On/Off, TRAIC (6W/10W/15W)
- Easy installation & maintenance

Targeting Customer

- Hotel Guest Room
- Hotel public Area
 - Corridor
 - Lobby
 - Saloon
 - Restaurant
 - Foyer



Explosive Overview

Super Flexible to create comfortable ambience.



Five Modules
6w/11w/15w/24w/33w/42w



External Driver connected
with modular

- 1) On/off (Standard)
- 2) TRAC Dimming (6w/10w/15w Standard)



Multiply of TRIMS for
applications, more than 30
options

GreenSpace Flex Benefits

Complete Portfolio

- **Product diversity** - Complete product scope, Cut off size from 3inch to 6 inch, 3 CCTs, 3 Beam angles etc



Flexibility & Customization

- Modular Design
- Multiply Choice of accessories



Visual Comfortable

- Deep recessed design
- UGR < 19
- Dark light reflector



Smart Connectivity

- Seamless integrated with Hospitality system.
- TRAIC, Dali (ETO), 0-10V(ETO)





Diverse with Modular Design

Modular

TRIM

	6w/11w	15w	24w	33w	42w



Flexible

- Light modular could have different Wattage/ CCT/ beam angle
- There are multiply of Trims to satisfy difference application scenario.
- The external drivers can be easily change to required options by customers

- Total 7 types of non-integrated version
- Interior looks better than ever with Expert Color (MR16 lamps)
- Hassle free & More efficient in use



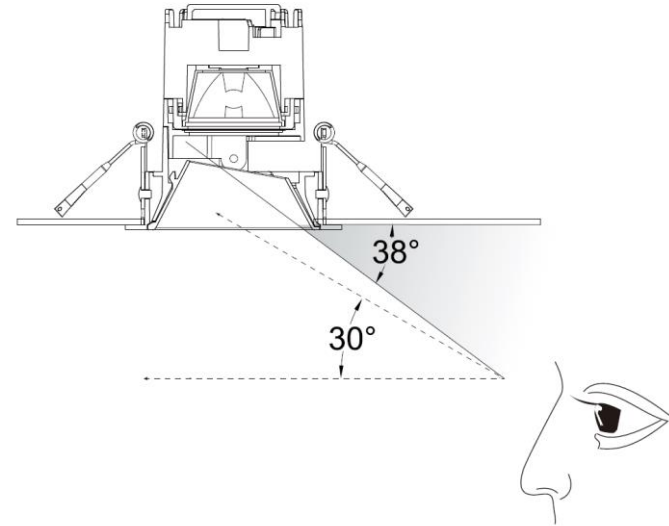


Comfortable

Anti-glare with visual comfort

Attention is paid to luminance patterns, to ensure the most comfortable lighting for Hospitality customers.

- Deep Recessed Design
- Shielding Angle 38 degree
- UGR < 19
- Dark Reflector as ETO



Easy

Easy installation & maintenance

- Independent installation frame to avoid damage of ceiling.
- Modular design for easy installation and replacement
- Customer could easily to prepare stock management for maintenance



Modular Products

Products	 	 	 	 	 
Watt	6/11 w	15w	24w	33w	42w
Lumen (3000K)	390-765LM	710-1050LM	1905LM	2400LM	3170LM
Lm/w	65-70LM/W	50-70LM/W	70-80LM/W	70LM/W	69LM/W
Beam Angle	15°/24°/32°/50(ETO)°	15°/30°/40°/50°(ETO)	18°/30°/40°/50°(ETO)	15°/24°/40°/50°(ETO)	18°/24°/32°/50°(ETO)
CCT	2700K/3000K/4000K	2700K/3000K/4000K	2700K/3000K/4000K	2700K/3000K/4000K	2700K/3000K/4000K
Lifetime	50k hours L80B50 @25C Ta indoor	50k hours L80B50 @25C Ta indoor	50k hours L80B50 @25C Ta indoor	50k hours L80B50 @25C Ta indoor	50k hours L80B50 @25C Ta indoor
Supply Voltage	220-240VAC,50/60Hz	220-240VAC,50/60Hz	220-240VAC,50/60Hz	220-240VAC,50/60Hz	220-240VAC,50/60Hz
Power Factor (full load)	>0.5	>0.9	>0.9	>0.9	>0.9
Housing Material	Albumin ADC12	Albumin ADC12	Albumin ADC12	Albumin ADC12	Albumin ADC12
Dimming	TRAIC	TRAIC	ETO	ETO	ETO

*Please refer to Specification file for more details

LED Waterproof portfolio

	Positioning		
Statement	GreenPerform Waterproof G2 Best-in-class technology	GreenPerform Waterproof G2 <ul style="list-style-type: none"> ✓ Leading design ✓ Excellent Performance ✓ Reliable quality ✓ Easy installation ✓ Easy Wiring 	
Performance	GreenUp Waterproof Safe and durable	GreenUp Waterproof <ul style="list-style-type: none"> ✓ High Efficacy ✓ UV-Shield PC and Extrusion ✓ Long lifetime 40k hours ✓ Uniform and comfortable light 	
Core	SmartBright Waterproof G2 Affordable and reliable saving LED Lighting Luminaires	SmartBright Waterproof G2 <ul style="list-style-type: none"> ✓ Robust Design IP65 IK06 ✓ Reliable quality 25k hours ✓ Easy Installation ✓ Easy Wiring 	

Waterproof Series

GreenPerform Waterproof G2



GreenPerform Waterproof G2 WT188C



Unique selling point

- **Leading design:** IP65 IK08, Anti UV Polycarbonate housing, dual extrusion technology, GreenParking system ready.
- **Excellent Performance:** good uniformity SDCM<5, high quality light CRI>80, excellent TCO efficiency > 110 lm/w, PF > 0.9.
- **Reliable Quality:** 50K hours @ L70B50, wide range working temperature from -30°C to +45°C, can be applied in various industrial environments.
- **Easy Installation:** Surface & suspension installation to ceiling and wall; stainless mounting clips and hooks, all in 1 package with luminaire.
- **Easy Wiring:** 3 wiring options same with conventional product, fulfill with customer wiring habits, and saving labor cost.

GreenPerform Waterproof G2 WT188C - Application



Industry- General area



Food and Beverage



Workshop/ Assembly



Car Park

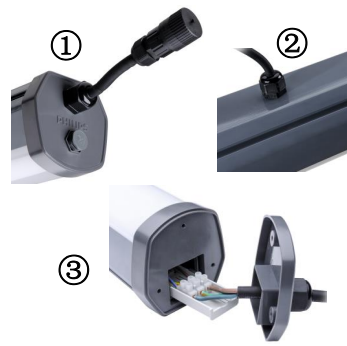


Canopy/ Walkways



Semi Outdoor

GreenPerform Waterproof G2 WT188C – Product Details



Easy wiring:

3 wiring options fulfill customer wiring habits, labor cost saving



Stainless Steel Hook & Bracket:

Hook: SUS201

Bracket: SUS301



Integral System:

Better thermal system
Higher efficacy > 110lm/w
50000hrs/ CRI>80/ SDCM<5

Robust Housing:

1. Anti-UV PC for semi outdoor application
2. Opal frosted diffuser, high uniformity, low glare, friendly to eyes
3. Dual extrusion production process, robust and elegant



Imported Breather:

Enhance anti-moisture performance

GreenPerform Waterproof G2 WT188C – Product Details

WT188C
Terminal Block
Push-in

Input



Connection



End

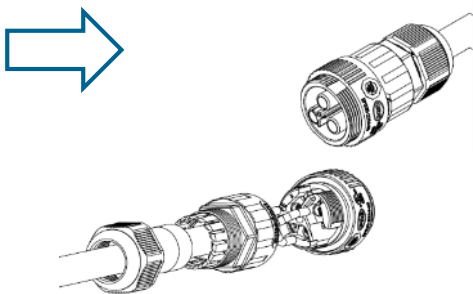


WT188C
Through Wiring

Input



Connection



Hook & Bracket



WT188C
Middle wiring

Input



End



Bracket



GreenPerform Waterproof G2 WT188C – Spec.

Product		Greenperform Waterproof G2 WT188C				Greenperform Waterproof G1 WT160C/ WT161C
Replacement		1/2 x 18W/14W		1/2 x 36W/28W		1/2 x 58W/54W
Types	Length	600mm		1200mm		1500mm
	Lumen	1000lm	2000lm	2000lm	4000lm	5400lm
	Power	9W	18W	16W	34W	50W
Electrical	Input Voltage	220~240/50~60hz				
	Power factor	0.9	0.95	0.9	0.9	0.95
	System Efficiency	111 lm/w	111 lm/w	125 lm/w	117 lm/w	108 lm/w
Optics	Color	NW 4000K; CW 6500K				
	SDCM	<5				
	CRI	>80				
	Photometric	symmetrica				
Mechanical	IP Rating	IP65				
	IK Rating	IK08				
	Dimesntion	W x H : 84.5 mm x 83.5 mm				W x H : 58 x 74 mm
Operating temperature		L600 and L1200: - 30°C ~ +45°C L1500: -30°C ~ +40°C				- 25°C~ +40°C
Safety Class		CLASS I				
Lifetime		50 K hrs (L70B50) @25°C				
Connect interface		Terminal block push -inside Middle Wiring Through Wiring max. 25pcs (L1200mm) Flying wire 0.3m (ETO option)				IP65 quick fix connector Through Wiring max. 25pcs (L1200mm)
Installation		Surface & Suspension				
System & Control		Fixed & Dali ACW Wireless (motion detective) - Wave II				Fix & Dali
Approbation		CB/ EMC/ CE/ SAA				

Waterproof Series

GreenUp Waterproof G2



GreenUp Waterproof WT118C

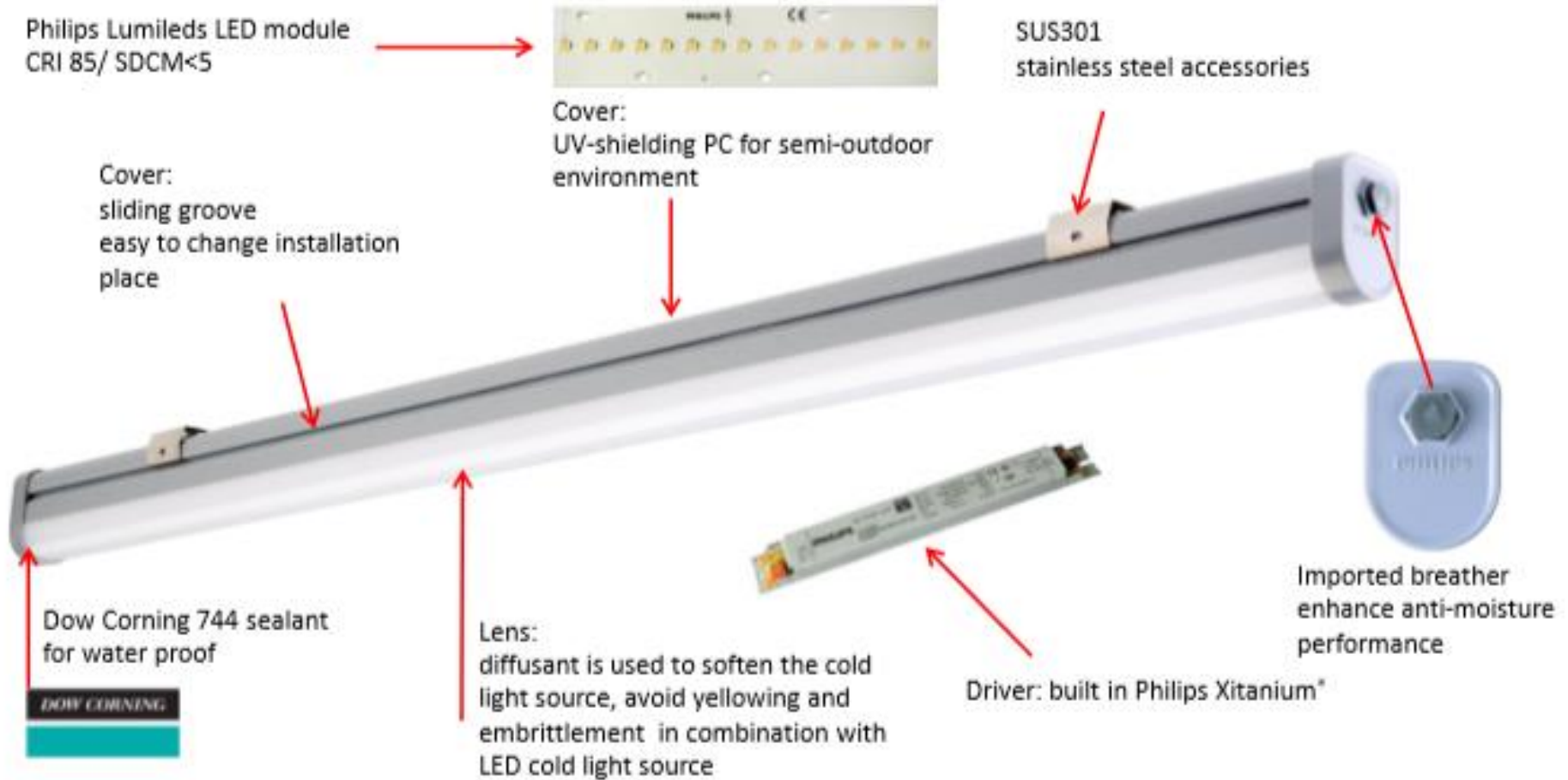


62%
savings



- High efficacy: **4800lm** system lumen, easy to replace **dual-T8** luminaire, efficacy up to 105lm/W, max.62% savings, DALI dimmable.
- Sound performance: **UV-shield** PC and **extrusion** process, suitable for semi-outdoor environments, built-in breather to keep its sound performance.
- Long lifetime: Philips **Lumileds** and **Xitanium[®]** ensure **40,000hrs** lifetime.
- Good light quality: Frosted PC cover for **uniform** and **comfortable** light experience with **CRI 85**.
- Flexible installations: sliding groove to make it flexible in installation.

GreenUp Waterproof WT118C – Product Details



GreenUp Waterproof WT118C – Product Spec

Product family	WT118C				
	LED Waterproof				
System output	4800lm	3800lm	1800lm	2000lm	1000lm
System power	46W	36W	20W	21W	11W
System Efficacy	104lm/w	105lm/w	90lm/w	95lm/w	90lm/w
Length	1450mm	1168mm		604mm	
Weight	1.2kg	0.9kg		0.5kg	
CCT	CW(6500K)/ NW (4000K)				
CRI	CRI 85				
SDCM	SDCM<5				
Lifetime	40,000hrs (L70) @Ta25C				
Control	PSU/ DALI				
Power factor	>0.9				
Materials	Shading side: PC				
	Diffusion side: UV-shielding & PC for thermal stability				
	Sealant: DoW Corning744				
	Accessories: SUS301 stainless steel				
	Breather: Donaldson				
IP rating	IP65				
IK rating	IK06				
Operation Temp.	-20C~+40C				
Classification	Class I				
Input Voltage	220-240V, 50/60 Hz				
Color	Dark grey RAL 7046				
Installation	Surface; Suspension				
Certificate	CB/EMC/AU&NZ/CE				

Waterproof Series

SmartBright Waterproof G2



SmartBright Waterproof G2 WT066C

Affordable and reliable saving LED Lighting Luminaires



Unique selling point

- **Robust design:** IP65 IK06, Anti UV Polycarbonate housing, dual extrusion technology.
- **Excellent Performance:** good uniformity SDCM<5, high quality light CRI>80, more brighter with higher lumen output.
- **Reliable Quality:** 25K hours with 70% lumen maintained, wide range working temperature from -30°C to +45°C, can be applied in various industrial environments.
- **Easy Installation:** Stainless Universal Mounting Clip, Stainless Screws, Stainless Hooks, all in 1 package with luminaire.
- **Easy Wiring:** 3 wiring options for select, fulfill with customer wiring habits.

SmartBright Waterproof G2 WT066C – Spec.

Product		Smart Bright Waterproof G2 WT066C				Smart Bright Waterproof G1 WT099C	Ess. Smart Bright Waterproof WT007C	
1 to 1 Replacement		1/2 x 18W/14W		1/2 x 36W/28W		1/2 x 58W/54W	Y	n/a
Diversity	Length	600mm		1200mm		1500mm	Y	600mm, 1200mm
	Lumen	900lm	1800lm	1800lm	3600lm	4500lm	1000lm, 1800lm, 3800lm, 4800lm	2200lm & 1100lm
	Power	9W	18W	18W	40W	50W	11W,21W,36W,46W	24W, 13W, 12W
	Color	NW 4000K/CW 6500K					Y	Y
Optics	SDCM	<5					Y	<7
	CRI	>80					Y	>70
	Optical Cover Width	~65mm					~45mm	Y
Electrical	Input Voltage	220~240/50~60hz					Y	Y
	Power factor	> 0.9					Y	0.85
System Efficiency		> 90 lm/W					> 105 lm/W	85 ~ 90 lm/W
Operating temperature		- 30°C ~ +45°C					-20°C~+35°C	-20°C~+35°C
IP rating		IP65					Y	Y
IK rating		IK06					Y	IK03
Lifetime		> 25K hrs (L70B50) @25°C					Y	20K hrs (L7B50) @Ta25C
Luminaire Class		Class II					Class I	Class I
Through Wiring Connect Qty		max. 6 pcs					1	1
Wiring interface		Through Wiring Stand aline: Terminal block inside Stand alone: Flying Wire 0.3M					0.3M flying wire	IP65 connector
Installation		Surface & Suspension					Y	Y
Package		1 luminaire in 1 plastic bag, with MI, barcode, product label inside 4 luminaires in 1 carton box, MOQ 4					1 luminaire in 1 colour box 12 colour boxes in 1 carton box, MOQ 12	1 luminaire in 1 mono box 6 mono boxes in 1 outbox, MOQ 6
Approbation		CB/EMC/CE/ NZ&AU					CB/EMC/CE/ NZ&AU	CB/EMC/ROHS
Control		Fixed Only					Y	Y
AFSP		Best					Normal	Normal

Economic LED Strip Transformer



LED Strip Transformer

Max 30W output	Economic LED Transformer 30W 24VDC
Max 60W output	Economic LED Transformer 60W 24VDC

Claim / USP's

- Constant Voltage
- LED Strip driver for 24VDC application

Reason to believe






- Compatible with Philips & other LED Strip and offer 24VDC interface for LED application
- Cost effective solution
- CE, CB, CCC, SELV



Product family info

Category / Product line	OEM/ Electronic Transformer
Segment	Hospitality, Retail
Launch classification	New mainstream range
Eco-Design	YES
Product Specs or features	Economic range & value for money Compatible with 24VDC LED strip Optimal system performance (high PF, low THD, good enough lifetime 20k-hs)
Product range	Economic LED Transformer 30/60W 24VDC
First launch expected in	Now

LED Transformer

Brand	Philips				
Type	Eco. LED Transformer 60W 24VDC				
Photo					
Output voltage	24VDC	24VDC	12VDC	12VDC	12VDC
Max. output power	60W	60W	60W	60W	50W
Power Factor	0.95	0.54	0.55	0.55	0.54
THD(%)	20%	150%	147%	148%	151%
Efficiency (%)	83%	86.9%	80.7%	84%	79.6%
SELV	Yes	No	No	No	No
CCC, CE	Yes	No	No	No	No
EMC compliance	Yes	No	No	No	No
Independent	No	No	No	Yes	No
Insulation class	Class II	Class I	Class I	Class I	Class I
Qty per MCB(16A Btype)	28	3	4	2	2
MAINS connection	L, N	L, N, E	L, N, E	L, N, E	L, N, E
size-Length(mm)	211	171	171	115	111
size-width(mm)	40	47	47	57	82

Dimmable LED Strip Transformer



LED Strip Transformer

Max 75W output	Dimmable LED Transformer 75W 24VDC
Max 150W output	Dimmable LED Transformer 150W 24VDC

Claim / USP's

- Constant Voltage
- Phase cut dimming function
- Dedicated LED Strip transformer for 24VDC application

Reason to believe

- Compatible with Philips & other LED Strip and offer 24VDC interface for LED application
- 30 K hour lifetime
- CE, CB, CCC, SELV, ENEC

LED & transformer combinations		Dimmer			Dimming range (%)**	
System Description	q'ty per dimmer	Brand	Model	Phase cut	Min	Max
Dimmable LED Transformer 75W 24VDC With 75W LED strips	1 Transformer	ABB	AE412	Leading edge	14%	100%
			Q8-2-M11	Leading edge	16%	100%
		Philips	DDLE802-MO	Trailing edge	3%	100%
		Siemens	SUH88223NC01	Leading edge	8%	100%
		Simon	45E101	Leading edge	14%	100%
		Panasonic	WMSS41	Trailing edge	2%	100%
		CHNT	NEW7-30540	Leading edge	14%	100%
		Opplle	K038102/630W	Leading edge	15%	100%
		SOBEN	650W	Leading edge	12%	100%

LED & transformer combinations		Dimmer			Dimming range (%)**	
System Description	q'ty per dimmer	Brand	Model	Phase cut	Min	Max
Dimmable LED Transformer 150W 24VDC With 150W LED strips	1 Transformer	ABB	AE412	Leading edge	10%	100%
			Q8-2-M11	Leading edge	8%	100%
		Philips	DDLE802-MO	Trailing edge	2%	100%
		Siemens	SUH88223NC01	Leading edge	8%	100%
		Simon	45E101	Leading edge	14%	100%
		Panasonic	WMSS41	Trailing edge	2%	100%
		CHNT	NEW7-30540	Leading edge	8%	100%
		Opplle	K038102/630W	Leading edge	8%	100%
		SOBEN	650W	Leading edge	8%	100%

Product family info

Category / Product line	OEM/ Electronic Transformer
Segment	Hospitality, Retail
Launch classification	New performance range
Eco-Design	YES
Product Specs or features	Standard range with dimmable function Compatible with 24VDC LED strip Optimal system performance (high PF, longer lifetime 30K - hs)
Product range	Dimmable LED Transformer 75W & 150W
First launch expected in	LAUNCH NOW !

LED Transformer



Commercial name	Dimmable LED Transformer	LED Transformer	Economic LED Transformer	LED Power Driver
Application	Most indoor application: Cove, shelf, panel ... , as long as matching constant voltage LED strips / module			RDL / Outdoor
Product type	Dimmable	Standard	Economic	
Positioning	Performance	Performance	Mainstream	Performance
Portfolio	75W, 150W	60W, 120W	30W, 60W, 120W, 180W	80W, 100W / 100W
Dimmable	Yes (phase cut)	No (dimming function after adding external dimming controller)		
Mains	220...240V			100...240V
Approbations, in addition to: SELF, IEC, Class II, EMC	CE, CCC, ENEC	CE, CCC, ENEC	CE, CCC	CE, VDE, IEC Household 90x25
Life (90% surviving khrs) @ Tc max	30	30	20	50
Housing	Metal (independent)	Plastics (independent)	Plastics (build in)	Metal (build in)
Connectors/wires	Connectors			Wires
Efficiency	85%	85%	82%	89%
Ambient temperature	-20...+50C			-30...+60C
Over-load/Over-heat / short circuit protection	Yes			Yes

